



REBAR SADDLES

TECHNICAL DATA SHEET

DESCRIPTION:

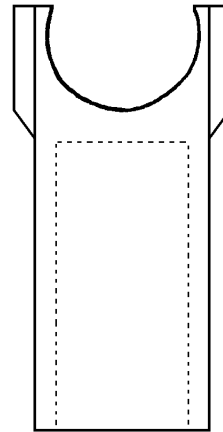
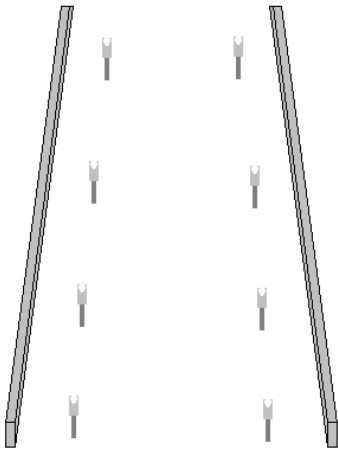
Rebar Saddles are made of high quality PVC plastic. They are designed to fit over the top of a piece of #4 rebar, and have another piece of #4 rebar snapped inside of its clip type opening.

Rebar Saddles are supplied in boxes of 3,000pcs.

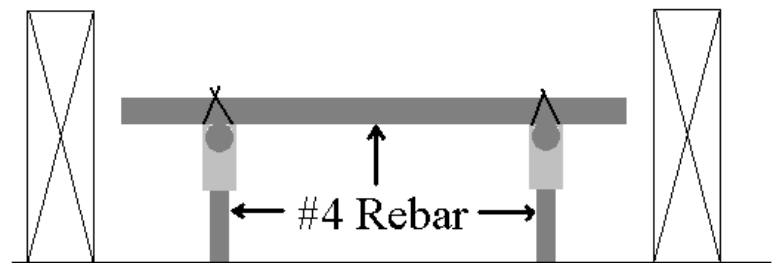
APPLICATION:

Rebar Saddles are used to support horizontal reinforcing bars in sidewalk forms. They provide an easy and economical way to set rebar, without using other more expensive and harder to use bar support methods.

First drive your #4 bars into the sub-base, push the Rebar Saddles onto the rebar, then snap your horizontal bars onto the Saddles. Next, the additional horizontal cross bars can be tied on.



Note: Spacing for rebar is determined by site plans, and or local building codes.



Sidewalk Form

