



# 18" UNREINFORCED BRACKET

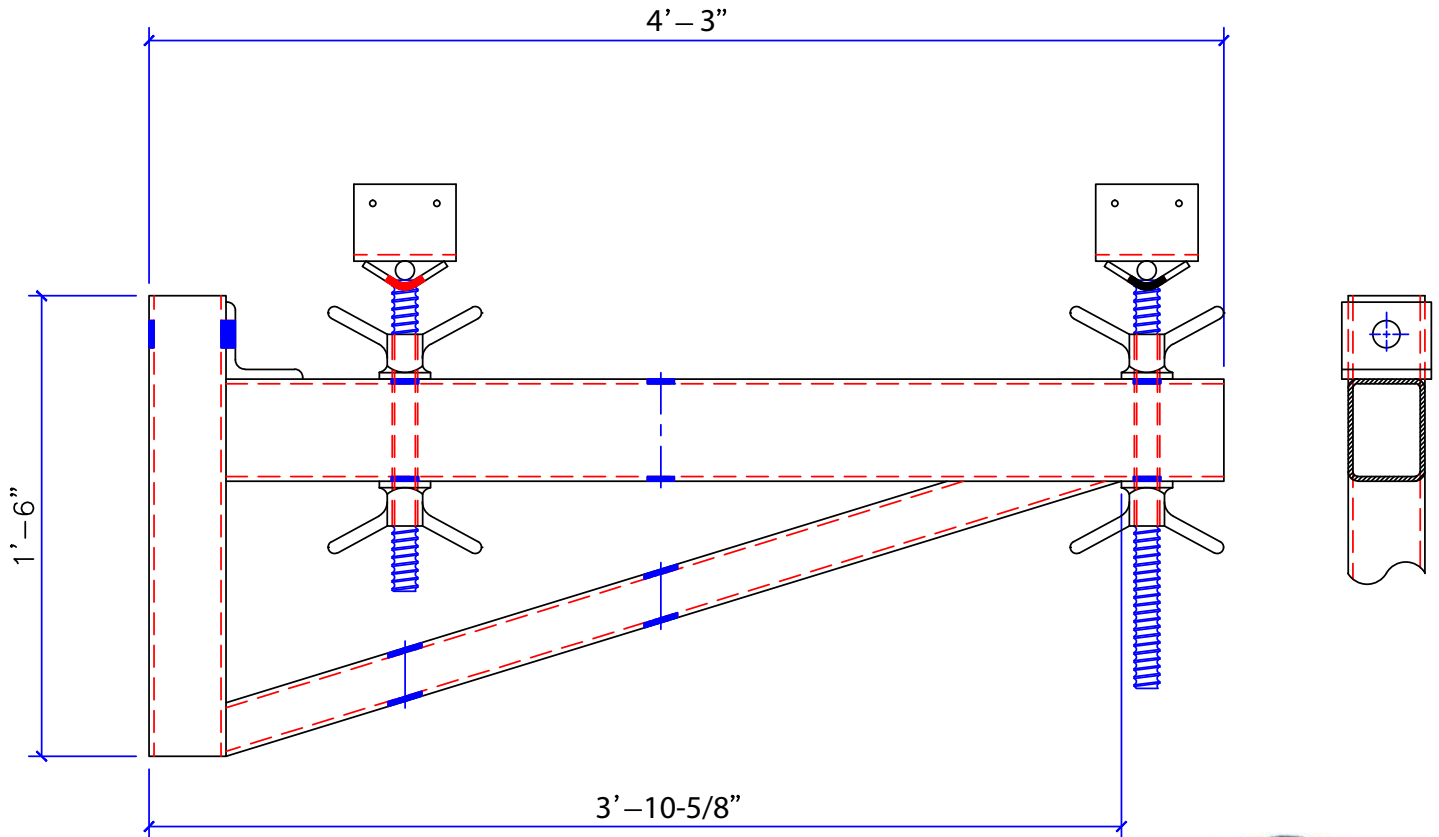
## LOAD TESTING DATA

### PROCEDURE:

The brackets were attached to a rectangle steel tube frame with additional reinforcement at the point where the brackets were mounted. A calibrated hydraulic jack was placed below the bracket and the test load was applied vertically. A dial indicator was placed near the end of the bracket to measure the upward movement of the bracket. A hydraulic jack was placed in the center location of the bracket and the load was applied.

### TESTING RESULT:

See attached test results for load ratings.





# 18" UNREINFORCED BRACKET

## LOAD TESTING DATA

### LOAD TEST SUMMARY – BRACKET

<b>BRACKET #1</b>			
<b>LOAD APPLIED (lbs.)</b>	<b>GAUGE (psi)</b>	<b>MOVEMENT (in.)</b>	<b>OBSERVATION</b>
4,590	1,000	0.482	NO CHANGE
9,440	2,000	0.894	NO CHANGE
13,880	3,000	1.102	NO CHANGE
16,210	3,500	1.300	NO CHANGE
18,510	4,000	1.560	GAP STARTING AT THE TOP OF THE BRACKET AND TUBE FRAME
19,028	4,100	1.710	BRACKET WALL ADJACENT TO TUBE FRAME BOWED. GAP OF 1/2" BETWEEN TOP OF BRACKET AND TUBE FRAME
<b>BRACKET NO LONGER LEVEL, TEST TERMINATED</b>			

<b>BRACKET #2</b>			
<b>LOAD APPLIED (lbs.)</b>	<b>GAUGE (psi)</b>	<b>MOVEMENT (in.)</b>	<b>OBSERVATION</b>
4,590	1,000	0.538	NO CHANGE
9,440	2,000	0.890	NO CHANGE
13,880	3,000	1.362	NO CHANGE
16,210	3,500	1.786	NO CHANGE
16,670	3,600	DIAL LOST CONTACT	BOWING ON BRACKET AT CONTACT OF BRACKET AND TUBE FRAME. 3/8" GAP AT THE TOP OF THE BRACKET
<b>BRACKET NO LONGER LEVEL, TEST TERMINATED</b>			





# 18" UNREINFORCED BRACKET

## LOAD TESTING DATA

### LOAD TEST SUMMARY – BRACKET

<b>BRACKET #2</b>			
<b>LOAD APPLIED (lbs.)</b>	<b>GAUGE (psi)</b>	<b>MOVEMENT (in.)</b>	<b>OBSERVATION</b>
4,590	1,000	0.401	NO CHANGE
9,440	2,000	0.613	NO CHANGE
13,880	3,000	0.647	BACK PLATE BOWED – 1/8" GAP
16,210	3,500	1.371	BACK PLATE BOWED – 1/4" GAP
18,510	4,000	DIAL LOST CONTACT	BOWING ON BRACKET AT CONTACT OF BRACKET AND TUBE FRAME. 3/8" GAP AT THE TOP OF THE BRACKET
<b>BRACKET NO LONGER LEVEL, TEST TERMINATED</b>			

