



# PARAPET BRACKET

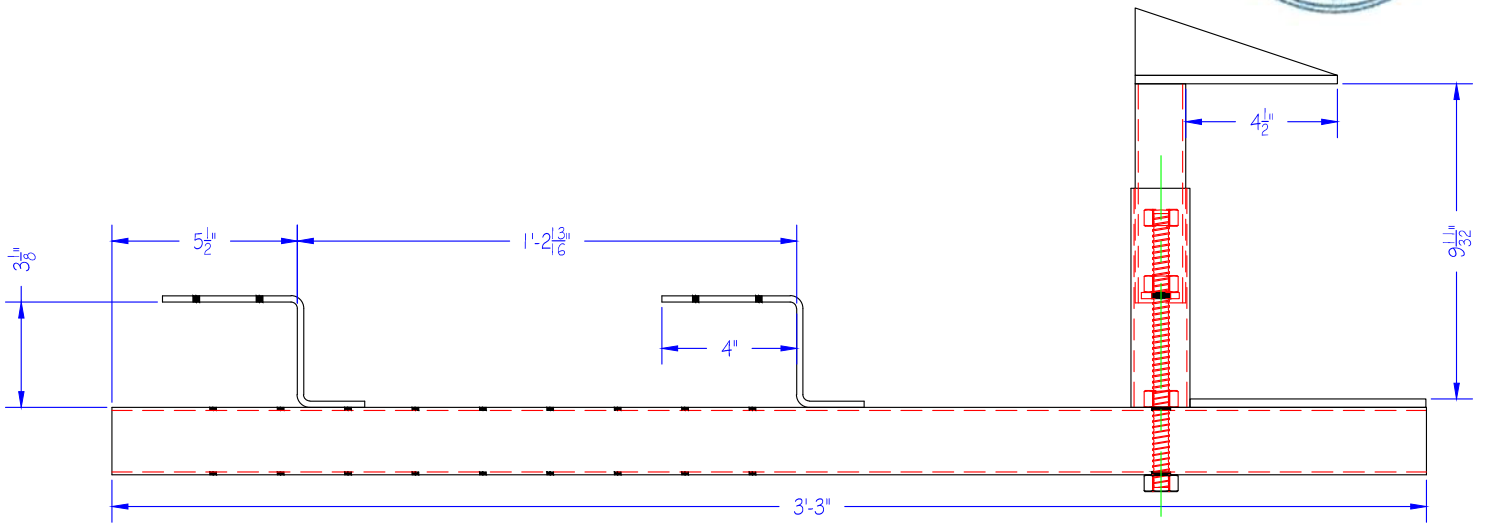
## LOAD TESTING DATA

### PROCEDURE:

The Parapet Bracket was mounted to a 4" x 4" wood beam which was connected to the testing frame for stability purpose. Two different loads, vertical and horizontal, were applied. The vertical download was applied using a calibrated hydraulic ram and the fork of a forklift was used for reaction load. The ram was placed above the Parapet Bracket and under the forklift fork. A load of 200 pounds was applied to determine if the Parapet Bracket will move. The horizontal load was applied using a come along, scale, and a chain. One end of the come along was connected to the Parapet Bracket using scale and chain. The other end of the come along was connected to the testing frame. A load of 200 pounds was applied to determine if the Parapet Bracket will move.

### TESTING RESULT:

No movement was observed during and after the 200 pounds load application.



PARAPET BRACKET LOAD TEST SUMMARY		
LOAD APPLIED (LBS.)	LOAD TEST	MOVEMENT (IN.)
200LBS.	VERTICAL - RAM & GAUGE	0.000
200LBS.	HORIZONTAL - COME ALONG & SCALE	0.000

