



# 60" MODIFIED BRACKET

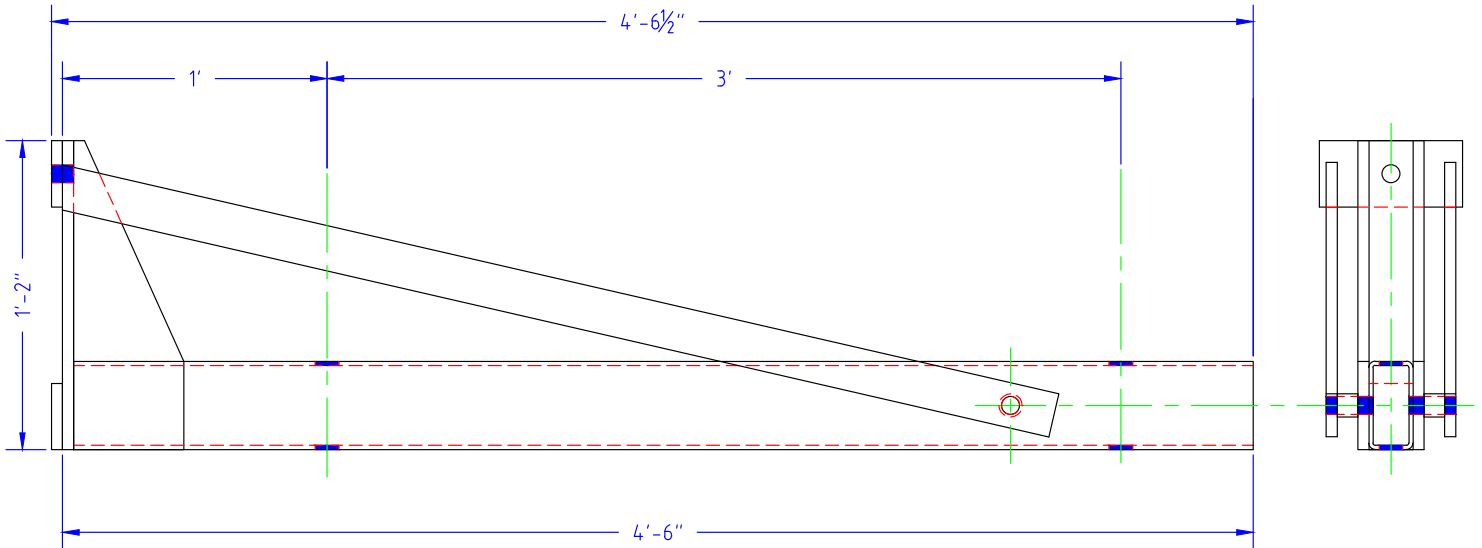
## LOAD TESTING DATA

### PROCEDURE:

The bracket was attached to a rectangular steel tube with additional reinforcement at the point where the bracket was mounted. A calibrated hydraulic jack was placed below the bracket and the test load was applied vertically. A dial indicator was placed near the end of the bracket to measure the upward movement of the bracket. A hydraulic jack was placed in the center location of the bracket, and the loading was completed in ten.

### TESTING RESULT:

Summary of the test results are included in this report.





# 60" MODIFIED BRACKET

## LOAD TESTING DATA

### LOAD TEST SUMMARY – BRACKET

CYCLE NO. 1		
LOAD APPLIED (lbs.)	GAUGE (psi)	GAUGE (psi)
498	100	0.060
996	200	0.108
1,494	300	0.179
1,992	400	0.227
2,490	500	0.268
2,910	600	0.328
3,330	700	0.360
3,750	800	0.410
4,170	900	0.451
4,590	1,000	0.490
5,062	1,100	0.528
5,534	1,200	0.564
6,006	1,300	0.606
AFTER RELEASE	—	0.102





# 60" MODIFIED BRACKET

## LOAD TESTING DATA

### LOAD TEST SUMMARY – BRACKET

CYCLE NO. 2		
LOAD APPLIED (lbs.)	GAUGE (psi)	GAUGE (psi)
498	100	0.115
996	200	0.148
1,494	300	0.194
1,992	400	0.235
2,490	500	0.264
2,910	600	0.306
3,330	700	0.329
3,750	800	0.371
4,170	900	0.407
4,590	1,000	0.434
5,062	1,100	0.460
5,534	1,200	0.490
6,006	1,300	0.514
AFTER RELEASE	—	0.068





# 60" MODIFIED BRACKET

## LOAD TESTING DATA

### LOAD TEST SUMMARY – BRACKET

CYCLE NO. 3		
LOAD APPLIED (lbs.)	GAUGE (psi)	GAUGE (psi)
498	100	0.071
996	200	0.127
1,494	300	0.195
1,992	400	0.235
2,490	500	0.277
2,910	600	0.330
3,330	700	0.382
3,750	800	0.441
4,170	900	0.488
4,590	1,000	0.536
5,062	1,100	0.573
5,534	1,200	0.613
6,006	1,300	0.645
AFTER RELEASE	—	0.126





# 60" MODIFIED BRACKET

## LOAD TESTING DATA

### LOAD TEST SUMMARY – BRACKET

CYCLE NO. 4		
LOAD APPLIED (lbs.)	GAUGE (psi)	GAUGE (psi)
498	100	0.068
996	200	0.123
1,494	300	0.157
1,992	400	0.197
2,490	500	0.247
2,910	600	0.310
3,330	700	0.375
3,750	800	0.430
4,170	900	0.485
4,590	1,000	0.525
5,062	1,100	0.561
5,534	1,200	0.595
6,006	1,300	0.627
AFTER RELEASE	—	0.038





# 60" MODIFIED BRACKET

## LOAD TESTING DATA

### LOAD TEST SUMMARY – BRACKET

CYCLE NO. 5		
LOAD APPLIED (lbs.)	GAUGE (psi)	GAUGE (psi)
498	100	0.076
996	200	0.140
1,494	300	0.201
1,992	400	0.227
2,490	500	0.269
2,910	600	0.313
3,330	700	0.388
3,750	800	0.451
4,170	900	0.506
4,590	1,000	0.546
5,062	1,100	0.581
5,534	1,200	0.621
6,006	1,300	0.667
AFTER RELEASE	—	0.047





# 60" MODIFIED BRACKET

## LOAD TESTING DATA

### LOAD TEST SUMMARY – BRACKET

CYCLE NO. 6		
LOAD APPLIED (lbs.)	GAUGE (psi)	GAUGE (psi)
498	100	0.077
996	200	0.137
1,494	300	0.198
1,992	400	0.232
2,490	500	0.274
2,910	600	0.323
3,330	700	0.383
3,750	800	0.438
4,170	900	0.492
4,590	1,000	0.536
5,062	1,100	0.571
5,534	1,200	0.605
6,006	1,300	0.636
AFTER RELEASE	—	0.083





# 60" MODIFIED BRACKET

## LOAD TESTING DATA

### LOAD TEST SUMMARY – BRACKET

CYCLE NO. 7		
LOAD APPLIED (lbs.)	GAUGE (psi)	GAUGE (psi)
498	100	0.096
996	200	0.153
1,494	300	0.180
1,992	400	0.211
2,490	500	0.264
2,910	600	0.326
3,330	700	0.389
3,750	800	0.444
4,170	900	0.496
4,590	1,000	0.540
5,062	1,100	0.573
5,534	1,200	0.607
6,006	1,300	0.645
AFTER RELEASE	—	0.046







# 60" MODIFIED BRACKET

## LOAD TESTING DATA

### LOAD TEST SUMMARY – BRACKET

CYCLE NO. 8		
LOAD APPLIED (lbs.)	GAUGE (psi)	GAUGE (psi)
498	100	0.072
996	200	0.131
1,494	300	0.170
1,992	400	0.210
2,490	500	0.261
2,910	600	0.389
3,330	700	0.389
3,750	800	0.437
4,170	900	0.491
4,590	1,000	0.529
5,062	1,100	0.569
5,534	1,200	0.607
6,006	1,300	0.638
AFTER RELEASE	—	0.100





# 60" MODIFIED BRACKET

## LOAD TESTING DATA

### LOAD TEST SUMMARY – BRACKET

CYCLE NO. 9		
LOAD APPLIED (lbs.)	GAUGE (psi)	GAUGE (psi)
498	100	0.084
996	200	0.140
1,494	300	0.176
1,992	400	0.229
2,490	500	0.273
2,910	600	0.336
3,330	700	0.398
3,750	800	0.456
4,170	900	0.508
4,590	1,000	0.550
5,062	1,100	0.587
5,534	1,200	0.617
6,006	1,300	0.652
AFTER RELEASE	—	0.061





# 60" MODIFIED BRACKET

## LOAD TESTING DATA

### LOAD TEST SUMMARY – BRACKET

CYCLE NO. 10		
LOAD APPLIED (lbs.)	GAUGE (psi)	GAUGE (psi)
498	100	0.090
996	200	0.156
1,494	300	0.180
1,992	400	0.214
2,490	500	0.266
2,910	600	0.330
3,330	700	0.391
3,750	800	0.448
4,170	900	0.499
4,590	1,000	0.542
5,062	1,100	0.575
5,534	1,200	0.610
6,006	1,300	0.648
AFTER RELEASE	—	0.088

