



# HEAVY FORMING

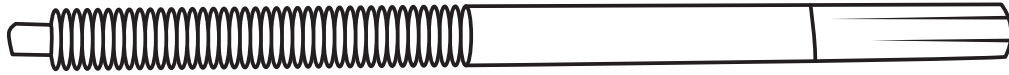
## SHE-BOLTS — TECHNICAL DATA SHEET

### DESCRIPTION:

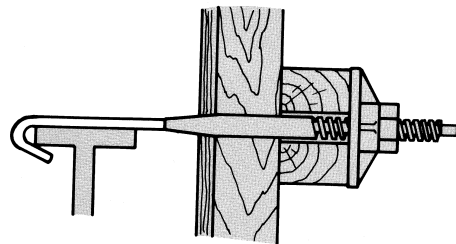
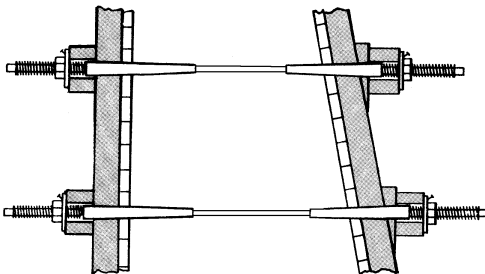
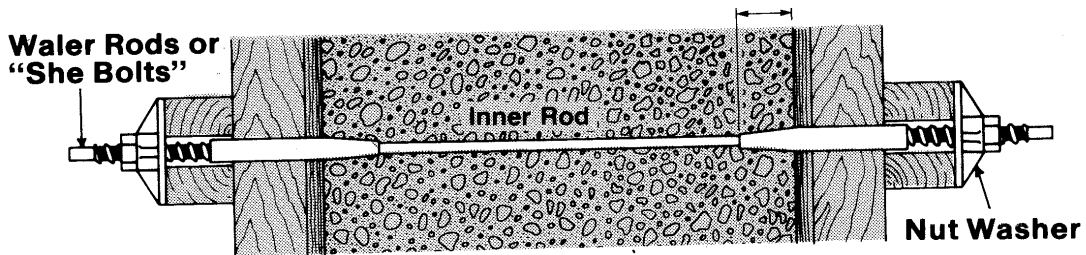
Standard Coil, Euro, or Acme threads She-Bolts. Available in 3/4", 7/8", 1-1/4", and 1-1/2" outside diameter thread. They can be manufactured with an 1/2", 5/8", 3/4", and 1" inner thread tap.

### APPLICATION:

Used in poured-in-place concrete forms. When used with nut washers, wing nuts, and plate washers, these She-Bolts can hold loads as specified in the table below.



<b>SHE BOLT DIAMETER</b>	3/4"	1-1/4"	1-1/2"
<b>S.W.L. TENSION (LBS.)</b>	9,000	18,000	37,500
<b>INSIDE THREAD TAP DIAMETER</b>	1/2"	3/4"	1"
<b>THREAD TYPE AVAILABLE</b>	ACME OR COIL	COIL	COIL
<b>SAFE WORKING LOAD APPROX. IS BASED ON A 2:1 SAFETY FACTOR</b>			



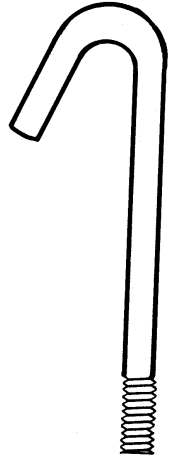


# HEAVY FORMING

## J-BOLTS & INNER RODS — TECHNICAL DATA SHEET

### DESCRIPTION:

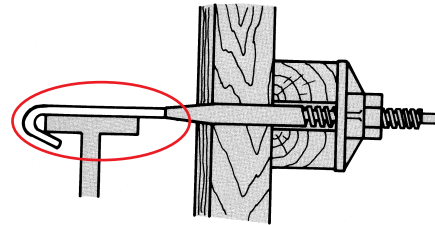
J-Bolts are threaded, bent steel rods, that are used in blind wall concrete forming. They are stocked in 1/2" diameter N.C. thread, and can be special ordered in 3/4" and 1" diameters in N.C. thread or Coil Thread.



### APPLICATION:

J-Bolts are used with She-Bolts in concrete forming applications. The standard hook wraps around the rebar or other steel, to allow for blind wall forming.

**UNEMBEDDED LOAD = 800LBS.  
APPROX.SAFETY FACTOR: 2:1**



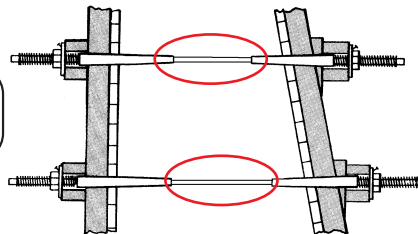
### DESCRIPTION:

Inner Tie Rods are available in Coil or N.C. thread. Inner Rods are made from High-Tensile Cold Rolled steel.

### APPLICATION:

Inner Tie Rods are used to tie She-Bolts together in concrete forming applications. They can be manufactured in Coil or N.C. thread, and can be fully threaded or thread on the ends only. Waterseal washers can also be applied to Inner Rods, for those jobs requiring a water-tight tie system.

**APPROX. SAFE WORKING LOAD = 2:1**



*Inner Rod w/optional waterseal*



*Inner Rod cut from Coil Rod*

<b>1/2" HI-TENSILE COIL OR N.C. THREAD</b>	<b>3/4" HI-TENSILE COIL OR N.C. THREAD</b>	<b>1" HI-TENSILE COIL OR N.C. THREAD</b>
<b>9,000 LBS. S.W.L.</b>	<b>18,000 LBS. S.W.L.</b>	<b>38,000 LBS. S.W.L.</b>





# HEAVY FORMING

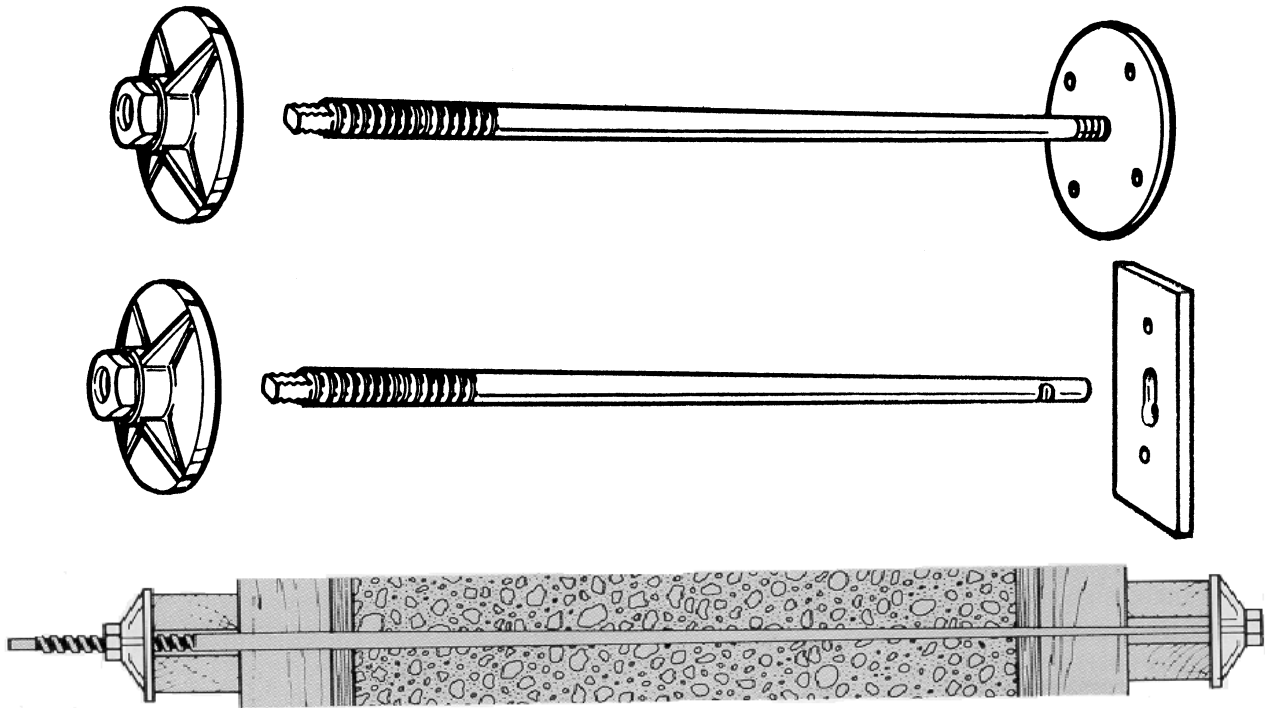
## STANDARD TAPER TIES — TECHNICAL DATA SHEET

### DESCRIPTION:

Standard Coil or Acme thread Taper Ties. Available in 1/2" and 3/4" diameter thread, and with a 1/2" keyplate slot.

### APPLICATION:

Used in poured-in-place concrete forms. When used with nut washers, wing nuts, or plate washers, these Taper Ties can hold loads as specified in the table below.



SAFE LOAD	LARGE END	SMALL END	TIE LENGTH
6,000	3/4" X 10" COIL OR ACME THREAD	1/2" X 2" COIL OR ACME THREAD	34"
6,000	3/4" X 10" COIL OR ACME THREAD	1/2" X 2" COIL OR ACME THREAD	43"
6,000	3/4" X 10" COIL OR ACME THREAD	1/2" X 2" COIL OR ACME THREAD	52"
6,000	3/4" X 10" COIL OR ACME THREAD	1/2" X 2" COIL OR ACME THREAD	61"
4,500	3/4" X 10" COIL OR ACME THREAD	1/2" KEYPLATE SLOT	34"
4,500	3/4" X 10" COIL OR ACME THREAD	1/2" KEYPLATE SLOT	43"
4,500	3/4" X 10" COIL OR ACME THREAD	1/2" KEYPLATE SLOT	52"
4,500	3/4" X 10" COIL OR ACME THREAD	1/2" KEYPLATE SLOT	61"

**SAFE WORKING LOAD IS APPROX. BASED ON A 2:1 SAFETY FACTOR**





# HEAVY FORMING

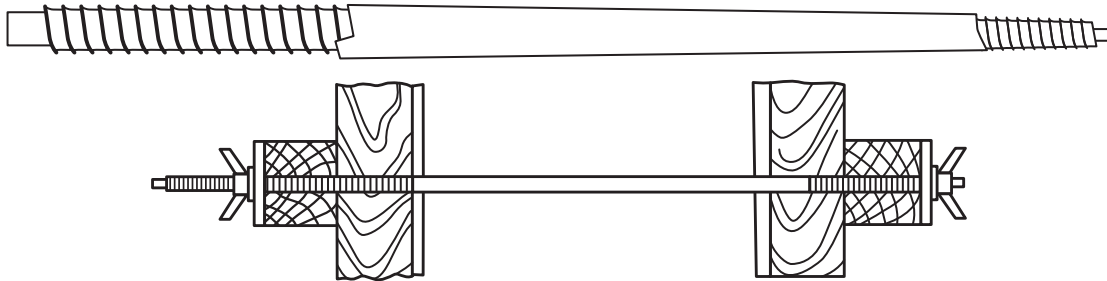
## HD TAPER TIES & COIL WING NUT TECHNICAL DATA SHEET

### DESCRIPTION:

Heavy Duty Coil-threaded, Euro-threaded, Acme-threaded, and N.C.-threaded Taper Ties. Available in 5/8", 3/4", 7/8", 1", 1-1/4", and 1-1/2".

### APPLICATION:

Used in heavy duty poured-in-place concrete forms. When used with wing nuts or plate washers, these Taper Ties can hold high loads as specified in the table below.



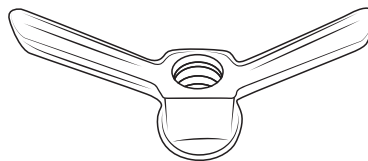
SIZE	3/4" TO 1/2"	1" TO 3/4"	1-1/4" TO 1"	1-1/2" TO 1-1/4"
S.W.L. TENSION (LBS.)	7,500	18,000	34,000	50,000
SAFE WORKING LOAD IS BASED ON APPROXIMATELY A 2:1 SAFETY FACTOR				

### DESCRIPTION:

Ductile Wing Nuts, available in 1/2", 3/4", 1", 1-1/4", 1-1/2" diameter Coil thread. Euro threaded Wing Nuts are also available.

### APPLICATION:

Used with Coil She-Bolts and Coil Taper Ties in heavy concrete forming applications.



DIAMETER	1/2"	3/4"	1"	1-1/4"	1-1/2"
S.W.L. TENSION (LBS.)	9,000	18,000	38,000	52,000	80,000
SAFE WORKING LOAD IS APPROXIMATELY BASED ON A 2:1 SAFETY FACTOR					

