



# D49 OVERHANG BRACKETS

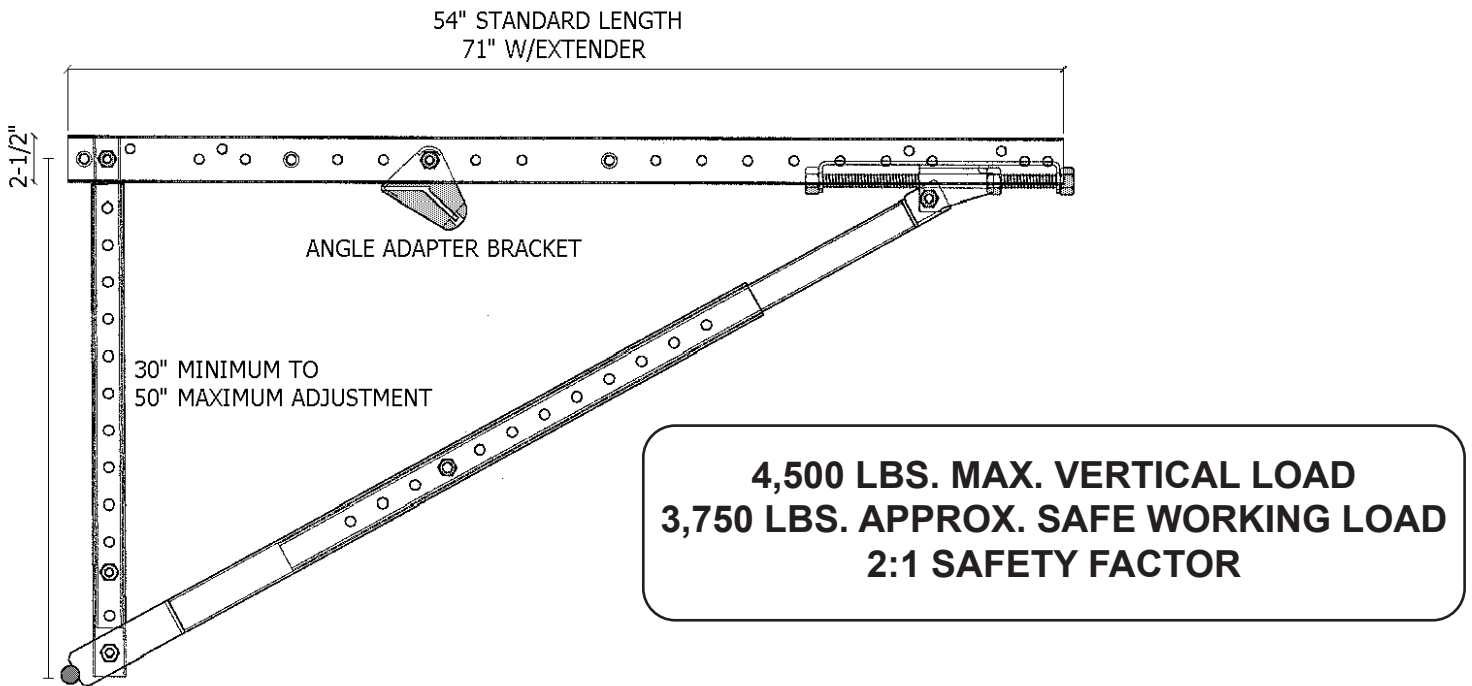
## TECHNICAL DATA SHEET

### **FEATURES:**

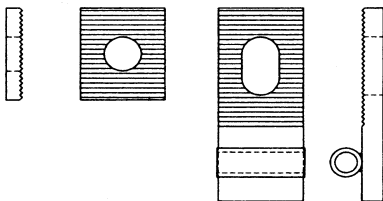
The Adjustable Bridge Overhang Bracket has maximum adjustability to meet the overhang forming requirements of Pre-Cast and Steel bridge beams. The 22" of adjustment provided by the diagonal leg, combined with the 20" of adjustment on the vertical leg; both adjustable of 2" allows for maximum versatility in overhang formwork design

### **INCREASED SPACING:**

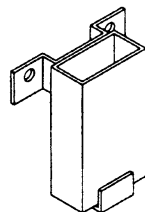
Adjustable Bridge Overhang Brackets can be spaced further apart than other brackets because of the high load carrying capacity. The maximum brackets spacing are achieved using hanger and hi-tensile coil rod.



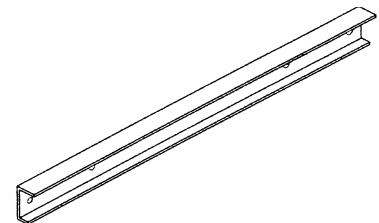
### ACCESSORIES



Wall Plate Assembly



Guard Rail Holder



Bracket Extender

