



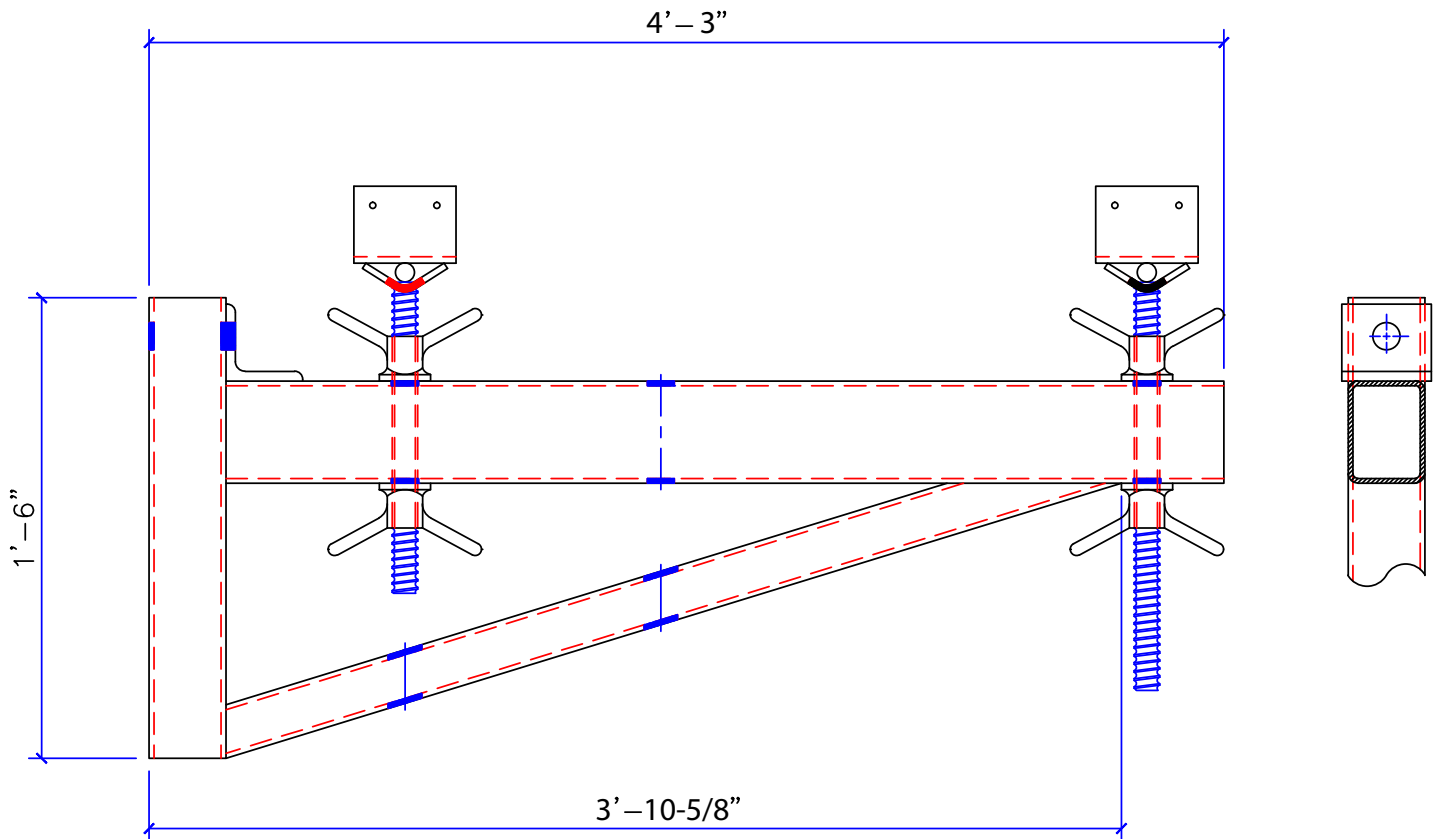
# 18" REINFORCED BRACKET

## LOAD TESTING DATA

### PROCEDURE:

Spectrum Concrete Products performed three load tests on the 18" Overhang Bracket. The bracket were attached to a rectangular steel tube frame with additional reinforcement at the point where the brackets were mounted. A calibrated hydraulic jack was placed below the bracket and the test load was applied vertically. A dial indicator was placed near the end of the bracket to measure the upward movement of the bracket.

A hydraulic jack was placed in the center of the location of the bracket, and the load was applied. Please see the load test summaries on the following page for testing results.



PART NUMBER	WEIGHT	PACKAGED
BOHB18	90.0 LBS.	EACH





# 18" REINFORCED BRACKET

## LOAD TESTING DATA

### LOAD TEST SUMMARY --- BRACKET

BRACKET #1			
LOAD APPLIED (lbs.)	GAUGE (psi)	MOVEMENT (in.)	OBSERVATION
4,590	1,000	0.510	NO CHANGE
9,440	2,000	0.692	NO CHANGE
13,880	3,000	0.818	NO CHANGE
16,210	3,500	1.062	1/16" GAP & BOW IN BRACKET TOP AT TUBE FRAME
18,510	4,000	1.218	1/8" GAP & BOW IN BRACKET TOP AT TUBE FRAME
21,100	4,500	1.508	1/8" GAP & BOW IN BRACKET TOP AT TUBE FRAME
<b>BRACKET NO LONGER LEVEL, TEST TERMINATED</b>			

BRACKET #2			
LOAD APPLIED (lbs.)	GAUGE (psi)	MOVEMENT (in.)	OBSERVATION
4,590	1,000	0.258	NO CHANGE
9,440	2,000	0.431	NO CHANGE
13,880	3,000	0.870	NO CHANGE
16,210	3,500	0.986	1/16" GAP & BOW IN BRACKET TOP AT TUBE FRAME
18,510	4,000	1.166	1/8" GAP & BOW IN BRACKET TOP AT TUBE FRAME
21,100	4,500	1.398	1/8" GAP & BOW IN BRACKET TOP AT TUBE FRAME
<b>BRACKET NO LONGER LEVEL, TEST TERMINATED</b>			

BRACKET #3			
LOAD APPLIED (lbs.)	GAUGE (psi)	MOVEMENT (in.)	OBSERVATION
4,590	1,000	0.044	NO CHANGE
9,440	2,000	0.200	NO CHANGE
13,880	3,000	0.414	NO CHANGE
16,210	3,500	1.154	1/16" GAP & BOW IN BRACKET TOP AT TUBE FRAME
18,510	4,000	1.383	1/8" GAP & BOW IN BRACKET TOP AT TUBE FRAME
21,100	4,500	1.676	1/8" GAP & BOW IN BRACKET TOP AT TUBE FRAME
<b>BRACKET NO LONGER LEVEL, TEST TERMINATED</b>			

