



GUARD RAIL POSTS

TECHNICAL DATA SHEET

DESCRIPTION:

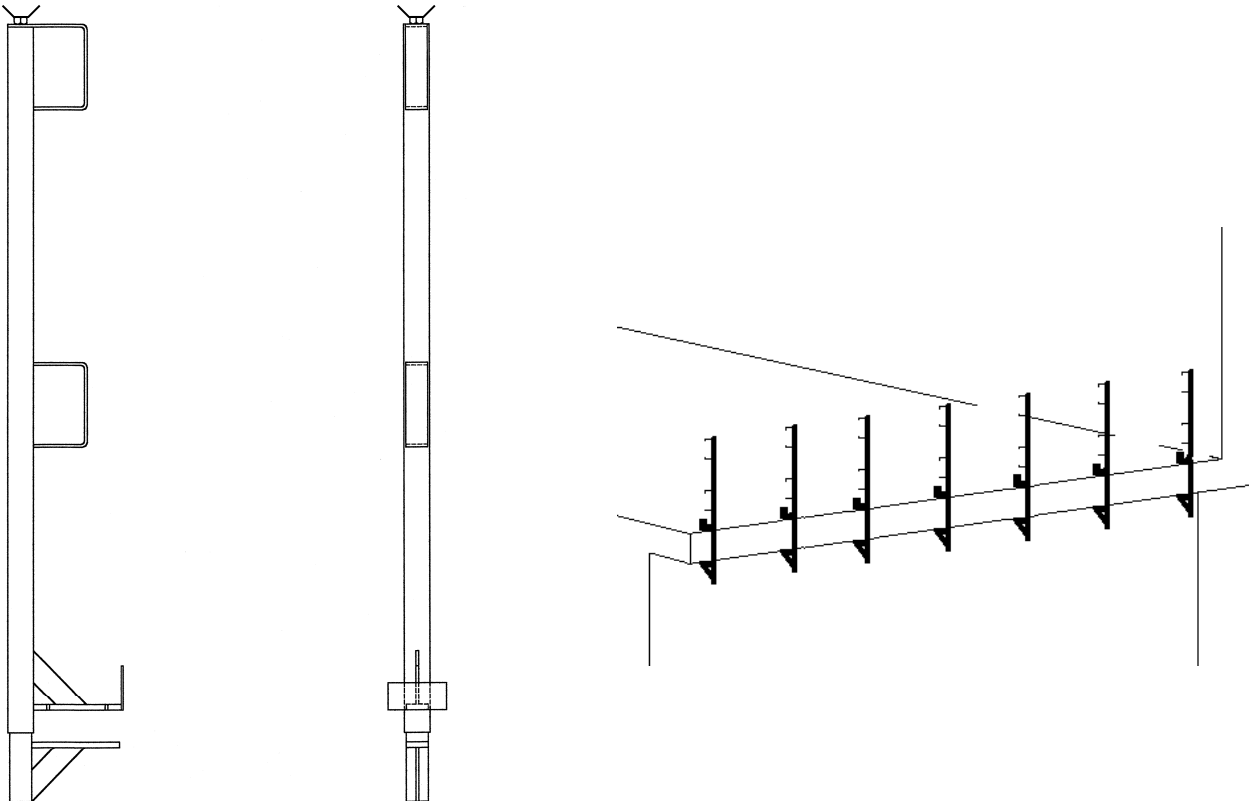
Guard Rail Posts, or Slab Grabbers, feature a square telescoping tube, providing a uniform top rail height of 42", closed loops for 2x4 or 2x6 wood rails, and a fast threading 3/4" coil rod for easy adjustment.

APPLICATION:

The Spectrum Guard Rail Post is a versatile and durable clamp-on post for use on open-sided floors, decks, and platforms of thicknesses from 3" to 36".

NOTE:

- Meets OSHA requirements
- Tall guard rail posts and hand rail posts available upon request.



PRODUCT CODE	WEIGHT (LBS.)	PACKAGED
GRDPST	23.0 / EACH	EACH

