



# SHE-BOLTS

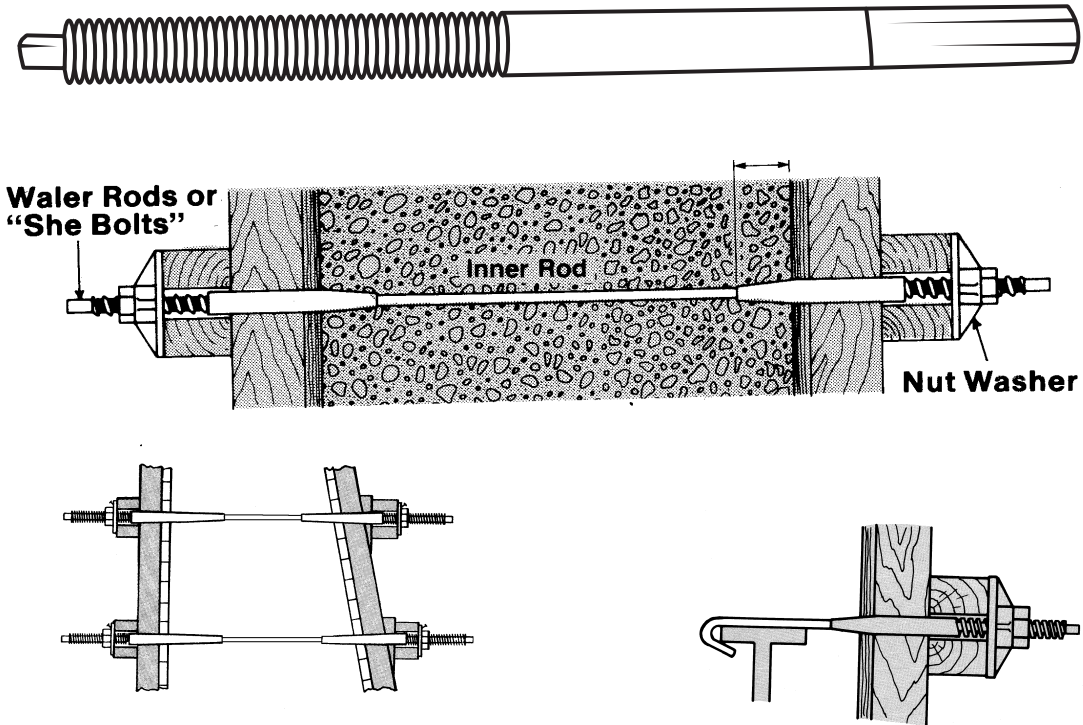
## TECHNICAL DATA SHEET

### DESCRIPTION:

Standard Coil, Euro, Acme thread She-Bolts. Available in 3/4", 7/8", 1-1/4", and 1-1/2" outside diameter thread. They can be manufactured with a 1/2", 5/8", 3/4", 1" inner thread tap.

### APPLICATION:

Used in poured-in-place concrete forms. When used with Nut Washers, Wing Nuts, or Plate Washers, these She-Bolts can hold loads as specified in the table below.



SHE BOLT DIAMETER	3/4"	1-1/4"	1-1/2"
S.W.L. TENSION (LBS.)	9,000	18,000	37,500
INSIDE THREAD TAP DIAMETER	1/2"	3/4"	1"
THREAD TYPE AVAILABLE	ACME OR COIL	COIL	COIL
<b>SAFE WORKING LOAD IS APPROX. BASED ON A 2:1 SAFETY FACTOR</b>			

