



PLATE TIE

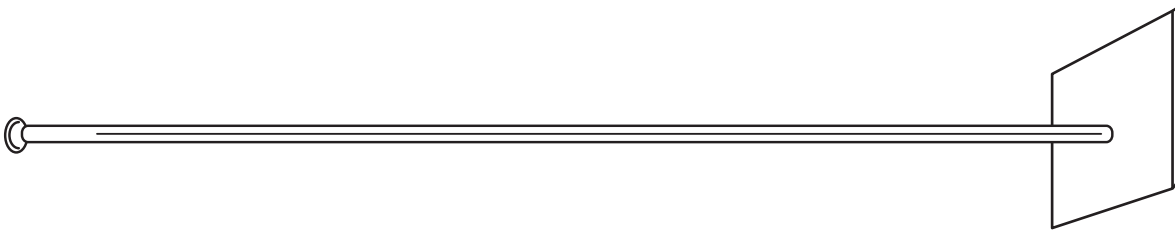
TECHNICAL DATA SHEET

DESCRIPTION:

The Plate Snaptie is similar to a standard Snaptie, but it has a square plate at the end.

APPLICATION:

Plate Snapties are used for tying light outside spandrel beams to steel frames.



LENGTH	WEIGHT
UP TO 30" OVERALL	41.3/C
EACH 1" ADD:	1.1/C
2,250LBS. S.W.L IS APPROX. BASED ON A 2:1 SAFETY FACTOR	

