



MIKE BRACKETS

TECHNICAL DATA SHEET

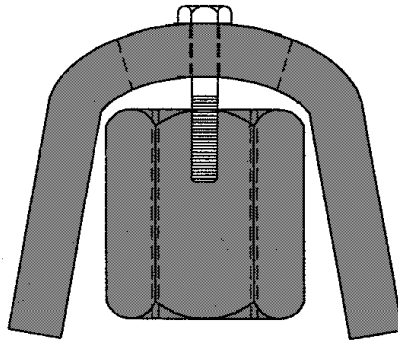
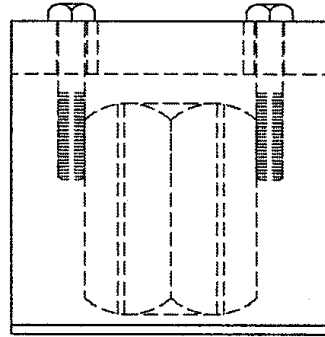
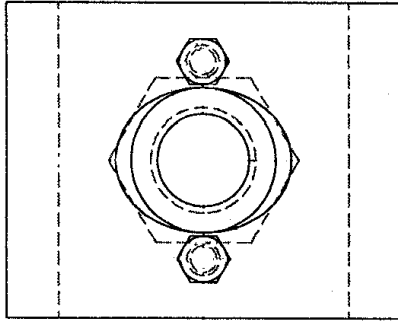
DESCRIPTION:

Mike Brackets are a welded assembly to be welded on the job existing steel in forms.

APPLICATION:

Mike Brackets tension loads are based on full fillet welds of individual bracket thickness to cleaned ASTM A36 structural (Carbon Steel) surface when welded in accordance with A.W.S. standard welding procedures. This product is not intended in permanent structure design.

NOTE: Spectrum Concrete Products, LLC. assumes no responsibility, nor liability for the welded connection of this product.



COIL DIAMETER	S.W.L. TENSION (LBS.)
5/8"	12,000
3/4"	18,000
1"	37,500
1-1/4"	44,000

SAFE WORKING LOAD IS APPROX. BASED ON 2:1 SAFETY FACTOR

