



INNER RODS

TECHNICAL DATA SHEET

DESCRIPTION:

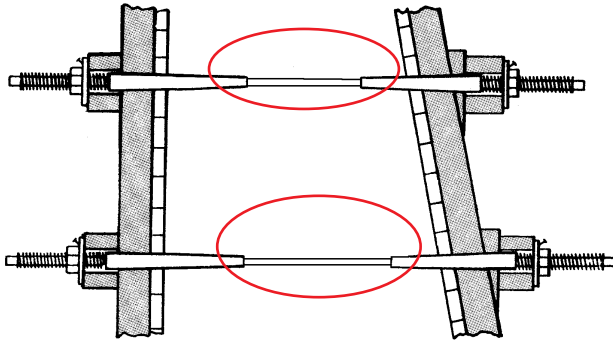
Inner Tie Rods, Coil, and N.C. Thread. Inner Tie Rods are made from high-tensile cold rolled steel.

APPLICATION:

Inner Tie Rods are used to tie She-Bolts together in concrete forming applications. They can be manufactured in Coil or N.C. thread, and can be fully threaded or threaded on the ends only.

WATERSEAL:

Neoprene Washers can also be applied to Inner Rods, for those jobs requiring a water-tight tie system. Made of 60 durometer commercial neoprene, these washers are used to help eliminate water seepage along the Inner Rod. Generally specified with She-Bolt application on water containment structures. Washers are factory installed in Chino, CA.



Inner Rod w/optional waterseal



Inner Rod cut from Coil Rod

1/2" HI-TENSILE COIL OR N.C. THREAD	3/4" HI-TENSILE COIL OR N.C. THREAD	1" HI-TENSILE COIL OR N.C. THREAD
9,000 LBS. S.W.L.	18,000 LBS. S.W.L.	38,000 LBS. S.W.L.
SAFE WORKING LOAD IS APPROX. BASED ON A 2:1 SAFETY LOAD		

