



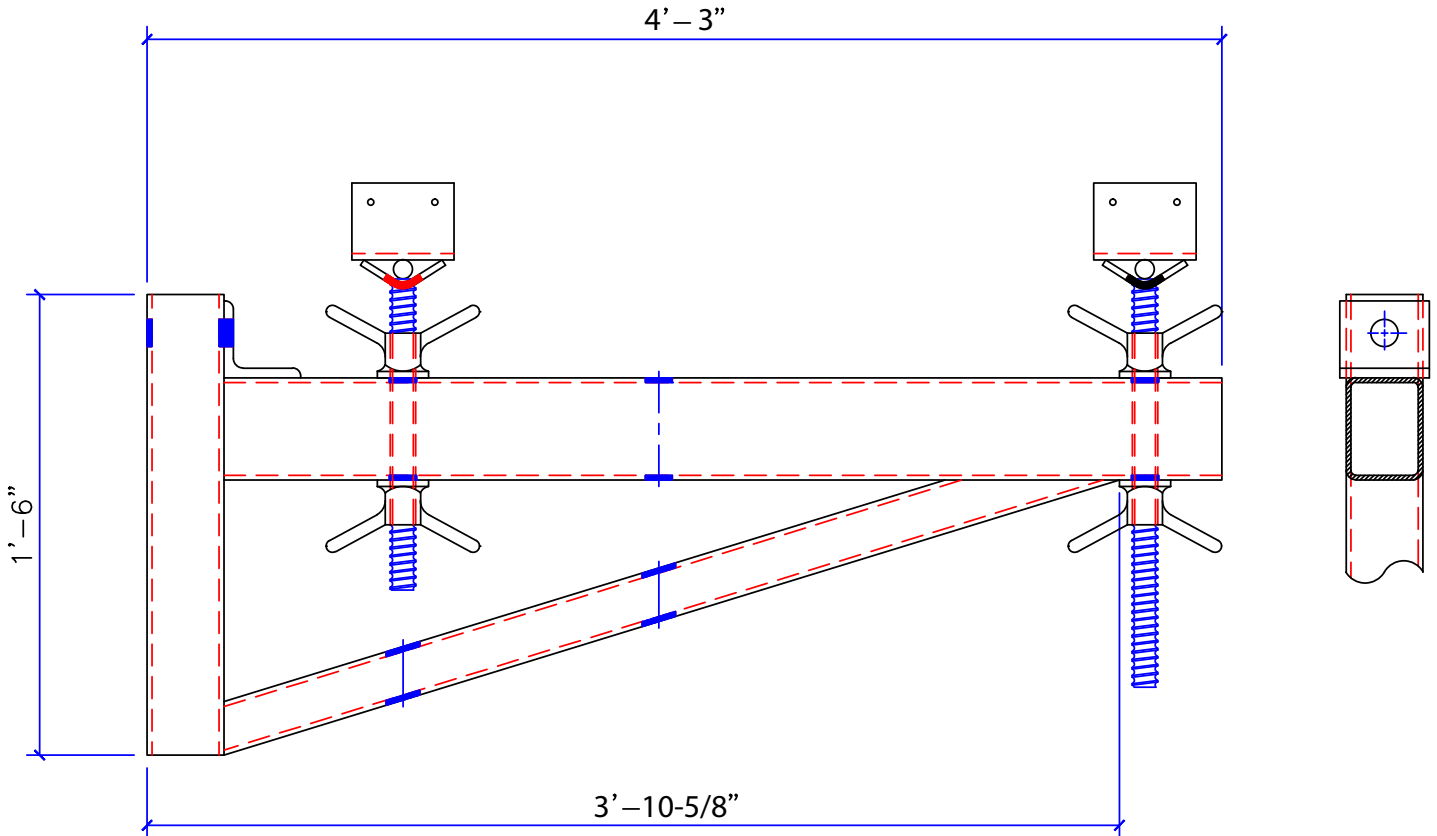
18" BRIDGE OVERHANG BRACKET

TECHNICAL DATA SHEET

DESCRIPTION:

Please call our office for data and strength information.

- Our 18" Bridge Overhang Bracket is CALTRANS Falsework compliant. Please refer to CALTRANS Falsework Manual Section 7-3.05 for compliancy details.



CALTRANS FALSEWORK COMPLIANT (SECTION 7-3.05)
CALL OUR OFFICE FOR STRENGTH AND LOAD DATA

