

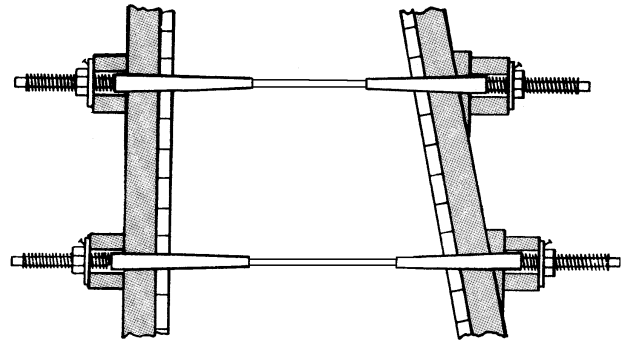
DESCRIPTION: Inner Tie Rods, Coil and N.C. Thread. Inner Tie Rods are made from High Tensile cold rolled steel.

APPLICATION: Inner Tie Rods are used to tie She-Bolts together in concrete forming applications. They can be manufactured in coil or N.C. thread, and can be fully threaded or thread on the ends only.

WATERSEAL: Neoprene Washers can also be applied to inner rods, for those jobs requiring a water-tight tie system. Made of 60 durometer commercial neoprene, these washers are used to help eliminate water seepage along the inner rod. Generally specified with she-bolt applications on water containment structures. Washers are factory installed in Chino, CA.



Safe Working Load = 2:1



**1/2" HI-TENSILE
COIL OR N.C.
THREAD
9,000LBS S.W.L.**

**3/4" HI-TENSILE
COIL OR N.C.
THREAD
18,000LBS S.W.L.**

**1" HI-TENSILE
COIL OR N.C.
THREAD
38,000LBS S.W.L.**