

DATA SHEET

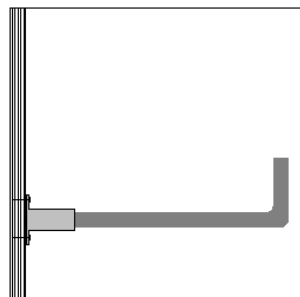
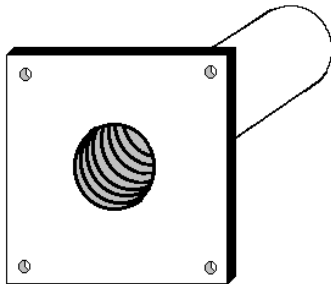
Dowel Bar Couplers & Splice Bars

DOWEL BAR SPLICES: Threaded rebar which is cut to order and threaded. They can be threaded on both ends, or bent to size as well. The table below lists the bar as well as the coupler data for each size of rebar.

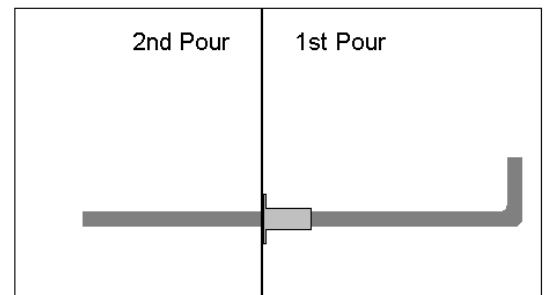
NOTE: When a dowel bar coupler connection is required to develop the full mechanical strength of the conventional rebar splice ($1.25F_y$), as defined by ACI 318, select one rebar size higher than the required size.

DOWEL BAR COUPLER: The Dowel Bar Coupler is manufactured with a positive thread stop in the center for equal splice bar engagement. They are fabricated from material meeting ASTM A-615.

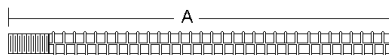
| SPLICE BAR DATA | | | DOWEL BAR COUPLER DATA | | |
|-----------------|---------------|--------------------|------------------------|-------------------|--------------------|
| Bar Size | Thread Data | Min. Ultimate Load | Thread Data | O.D. x Length | Min. Ultimate Load |
| #4 | 1/2" - 13 NC | 12,800 lbs. | 1/2" - 13 NC | 3/4" x 1-7/8" | 19,100 lbs. |
| #5 | 5/8" - 11 NC | 20,300 lbs. | 5/8" - 11 NC | 7/8" x 2" | 23,000 lbs. |
| #6 | 3/4" - 10 NC | 30,100 lbs. | 3/4" - 10 NC | 1-1/16" x 2-3/8" | 34,700 lbs. |
| #7 | 7/8" - 9 NC | 41,600 lbs. | 7/8" - 9 NC | 1-1/4" x 2-3/4" | 39,500 lbs. |
| #8 | 1" - 8 NC | 54,500 lbs. | 1" - 8 NC | 1-3/8" x 3-1/8" | 54,600 lbs. |
| #9 | 1-1/8" - 7 NC | 68,700 lbs. | 1-1/8" - 7 NC | 1-5/8" x 3-5/8" | 72,000 lbs. |
| #10 | 1-1/4" - 8 UN | 90,000 lbs. | 1-1/4" - 8 UN | 1-3/4" x 4-1/8" | 91,900 lbs. |
| #11 | 1-3/8" - 8 UN | 111,000, lbs. | 1-3/8" - 8 UN | 1-15/16" x 4-3/8" | 114,100, lbs. |



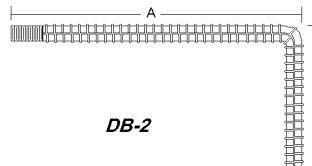
Installation of Splice Bar



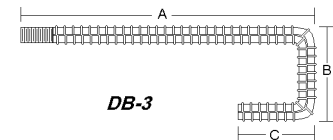
Completed Installation



DB-1



DB-2



DB-3



DB-4

SPECTRUM CONCRETE PRODUCTS

Chino, CA

Phone: 909.590.0066

Fax: 909.590.0061

